

Camping

Those who enjoy camping have the option to do so at the closest campsite, about 3 km from the venue on Blonia Field.

The address is:

Camping "Smok" (nr 46, category ***)
Magdalena Klaput
Krakow, Kamedulska st. 18
Tel. +48 12 429 83 00
www.smok.krakow.pl
info@smok.krakow.pl

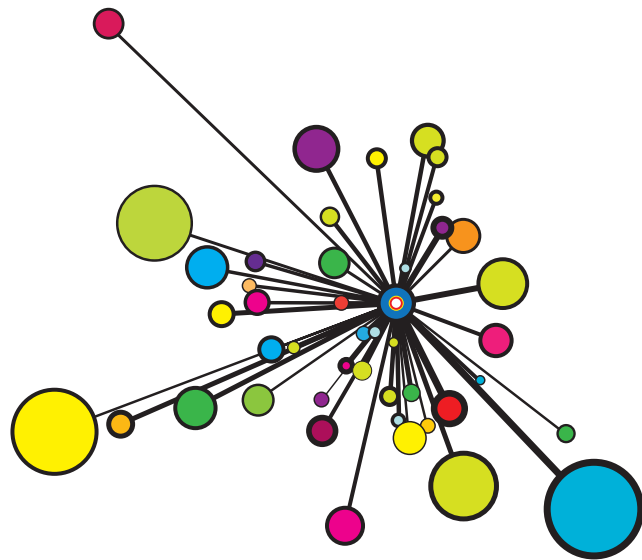
Bookings have to be arranged independently. Please contact the campsite well ahead of time. You will find fees for camping on the homepage: <http://www.smok.krakow.pl>. When booking, please inform the camp ground that you will be attending the Methodist Festival.

Fees for the camping are paid independently to the campsite.

Hotels

Krakow has a variety of hotels in different categories. You will have to book your room independently.

More information about hotels can be found on the festival's homepage: www.methodistfestival.eu.



Registration and Payment

Please register exclusively through the website at www.methodistfestival.eu. The registration link is www.methodistfestival.eu/register2012. Please provide all mandatory information. When registering, you will have to pay a registration fee of 10 € per Person. This fee will be credited to your total amount due. In case of cancellation, this fee will be retained as handling fee.

Because we need precise information about the participants, group registration will not be possible. For further questions, the festival helpline will be available in English and German: **+49 711 860068-6**

Should you need help with registering, contact the central church office at www.methodistfestival.eu/mf2012reghelp.

Registration help via email (English, German): registration@methodistfestival.eu

Methodist Festival's bank data is as follows:
Methodist Festival
EKK-Bank (Frankfurt)
Konto: 4101855
BLZ: 520 604 10
IBAN: DE91 5206 0410 0004 1018 55
BIC: GENODEF1EK1

Languages

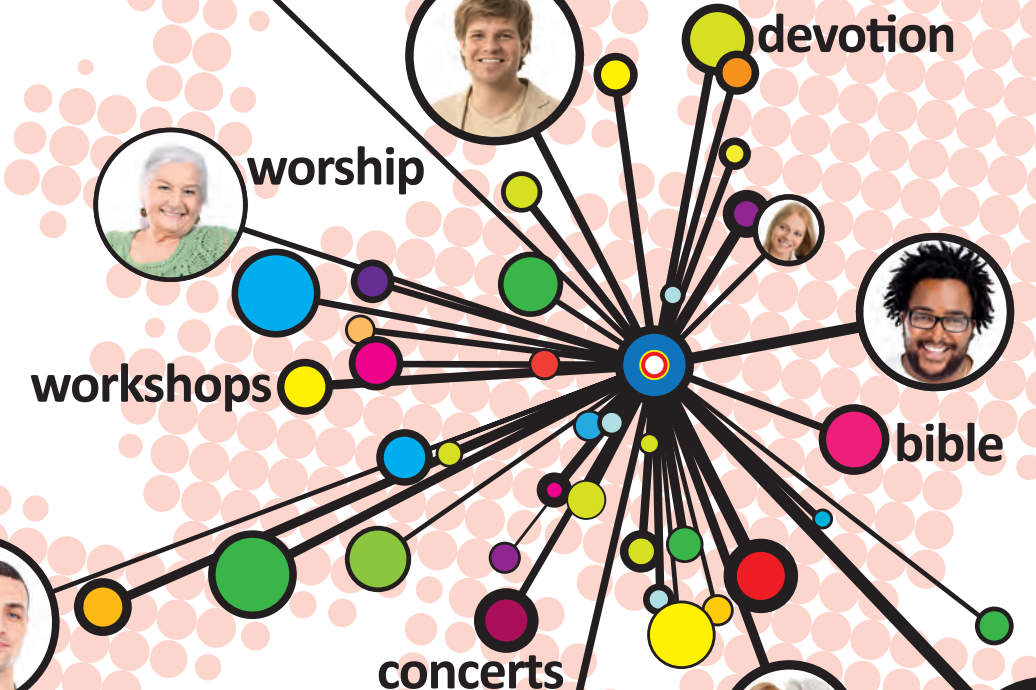
The official languages, for translation at the festival are: German, English, Polish.



Contact

Methodist Festival 2012
c/o KJW Sued
Giebelstr. 16
DEU-70499 Stuttgart
Germany

Fon: +49 711 860068-6
Fax: +49 711 860068-8
E-Mail: infobox@methodistfestival.eu





The European Methodist Council invites you to the third European Methodist Festival

POTSDAM (D) 2003 – BRATISLAVA (SK) 2007 – **KRAKOW (PL) 2012**

It's for YOU – “For You”,

We are preparing this large meeting for young and old, for children and youth, for singles and families. We are expecting 1000 people between Wednesday, **8th and Sunday, 12th August 2012.**

We will meet in workshops, seminars, Wesley (small) groups and prayer groups, at Morning Praise and in night cafés, at Gospel workshops and relaxed coffee groups at the ‘EMK-Mobil’. Sports and games will also be offered.

The encounters at this event will enrich us as Methodists and United Methodist Christians from different European countries and strengthen our faith.

More information about the festival and current news can be found online at www.methodistfestival.eu

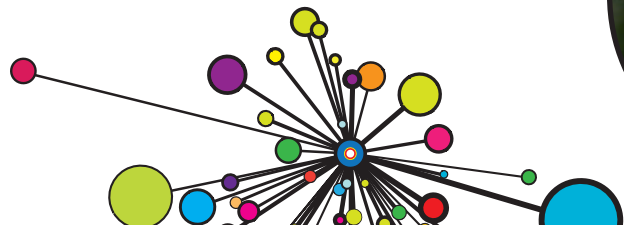
A guided tour of the city and trips to nearby sights (e.g. the Auschwitz memorial site) are being planned.

- + We will listen and learn from one another
- + We will talk and debate
- + We will sing and play
- + We will celebrate Jesus
- + We will confess our faith in the midst of the city of Krakow

Our tent city will be built on the area of ‘Blonia Field’.

Accommodation

We have booked plenty of rooms and apartments in the student dormitories of the AGH University for Science and Technology. The dining hall will take good care of us. Hotels will also be offered. You can find a map of AGH University at <http://de.checkinkrakow.com/krakow-agh-university-map.aspx>.



Fees

This year, there is a principle of solidarity and mutual support behind the fees for the Festival. Participation is offered in three categories: A **sponsored rate**, a **regular rate**, and a **sponsoring rate**. The idea is for you to decide how much you will be able to pay. By choosing the sponsoring rate, you enable someone who will be able to pay only the sponsored rate to participate in the Methodist Festival.



The standardized fee for all meals is set at 70 €/Person.

Festival participant fee:

- + Sponsored Rate **70,- €**
- + Regular Rate **100,- €**
- + Sponsoring Rate **150,- €**



The festival will offer various possibilities for lodging. You will find them in the table below. Together with the fees for meals and lodging, the complete price is calculated. When you sign up online, you will be able to choose the appropriate rate.

Children under the age of six participate free of charge.

There's a **discount for children and teenagers between the age of 7 and 14 years** for meals and festival fee:

- + Sponsored Rate 7-14 yrs.
meals **35,- €**
festival fee **35,- €**
- + Regular Rate 7-14 yrs.
meals **70,- €**
festival fee **50,- €**
- + Sponsoring Rate 7-14 yrs.
meals **70,- €**
festival fee **100,- €**



Fees for Lodging, meals and participation for the entire Festival (4 days)

Rate: Standard – STOKROTKA

	category	building	lodging per person	meals per person	festival fee per person	TOTAL per person
Sponsored Rate	Standard single	STOKROTKA	30,00 €	70,00 €	70,00 €	170,00 €
	Standard double	STOKROTKA	25,00 €	70,00 €	70,00 €	165,00 €
	Standard triple	STOKROTKA	20,00 €	70,00 €	70,00 €	160,00 €
Regular Rate	Standard single	STOKROTKA	40,00 €	70,00 €	100,00 €	210,00 €
	Standard double	STOKROTKA	40,00 €	70,00 €	100,00 €	210,00 €
	Standard triple	STOKROTKA	30,00 €	70,00 €	100,00 €	200,00 €
Sponsoring Rate	Standard single	STOKROTKA	50,00 €	70,00 €	150,00 €	270,00 €
	Standard double	STOKROTKA	50,00 €	70,00 €	150,00 €	270,00 €
	Standard triple	STOKROTKA	40,00 €	70,00 €	150,00 €	260,00 €

Rate: Standard PLUS – OMEGA

	category	building	lodging per person	meals per person	festival fee per person	TOTAL per person
Sponsored Rate	Standard + single	OMEGA	45,00 €	70,00 €	70,00 €	185,00 €
	Standard + double	OMEGA	32,50 €	70,00 €	70,00 €	172,50 €
Regular Rate	Standard + single	OMEGA	75,00 €	70,00 €	100,00 €	245,00 €
	Standard + double	OMEGA	50,00 €	70,00 €	100,00 €	220,00 €
Sponsoring Rate	Standard + single	OMEGA	120,00 €	70,00 €	150,00 €	340,00 €
	Standard + double	OMEGA	87,50 €	70,00 €	150,00 €	307,50 €

Rate: Standard PLUS – ALFA

	category	building	lodging per person	meals per person	festival fee per person	TOTAL per person
Sponsored Rate	Standard + single	ALFA	40,00 €	70,00 €	70,00 €	180,00 €
	Standard + double	ALFA	30,00 €	70,00 €	70,00 €	170,00 €
	Standard + triple	ALFA	30,00 €	70,00 €	70,00 €	170,00 €
Regular Rate	Standard + single	ALFA	65,00 €	70,00 €	100,00 €	235,00 €
	Standard + double	ALFA	43,00 €	70,00 €	100,00 €	213,00 €
	Standard + triple	ALFA	39,35 €	70,00 €	100,00 €	209,35 €
Sponsoring Rate	Standard + single	ALFA	130,00 €	70,00 €	150,00 €	350,00 €
	Standard + double	ALFA	75,00 €	70,00 €	150,00 €	295,00 €
	Standard + triple	ALFA	53,35 €	70,00 €	150,00 €	273,35 €

Rate: Standard PLUS – OLIMP

	category	building	lodging per person	meals per person	festival fee per person	TOTAL per person
Sponsored Rate	Standard + single	OLIMP	45,00 €	70,00 €	70,00 €	185,00 €
	Standard + double	OLIMP	32,50 €	70,00 €	70,00 €	172,50 €
Regular Rate	Standard + single	OLIMP	65,00 €	70,00 €	100,00 €	235,00 €
	Standard + double	OLIMP	43,00 €	70,00 €	100,00 €	213,00 €
Sponsoring Rate	Standard + single	OLIMP	130,00 €	70,00 €	150,00 €	350,00 €
	Standard + double	OLIMP	75,00 €	70,00 €	150,00 €	295,00 €

Bookings after 1. May 2012 will be charged 20 € extra per person on their total fee (penalty rate).